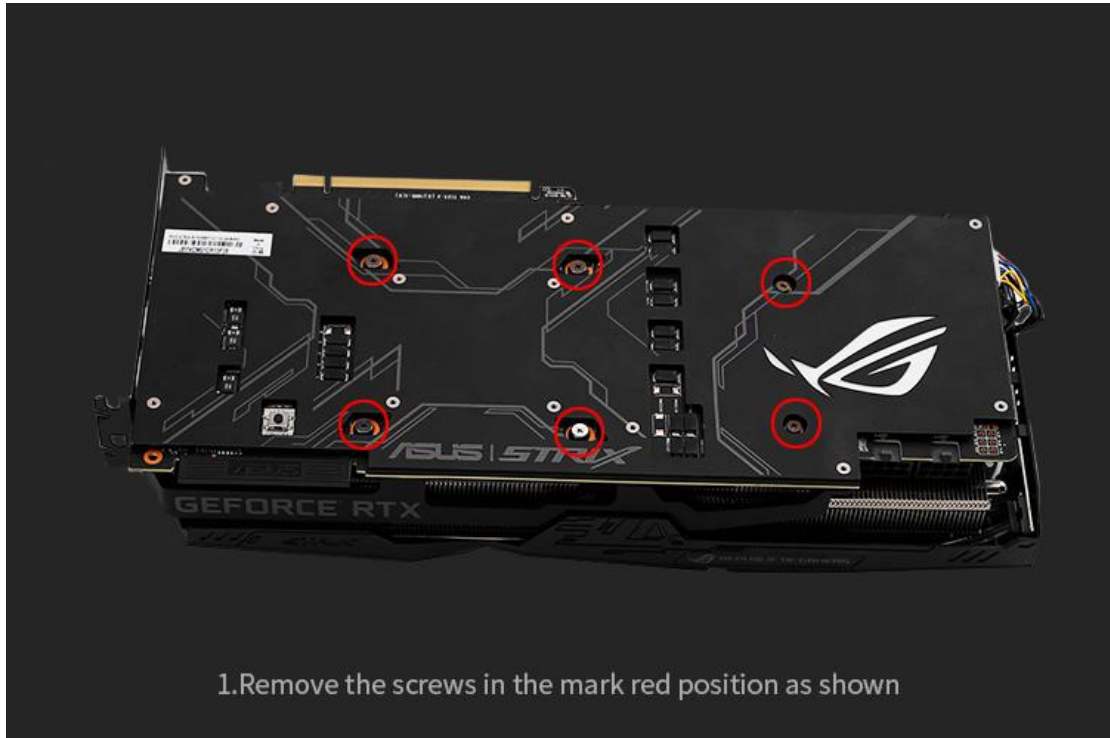
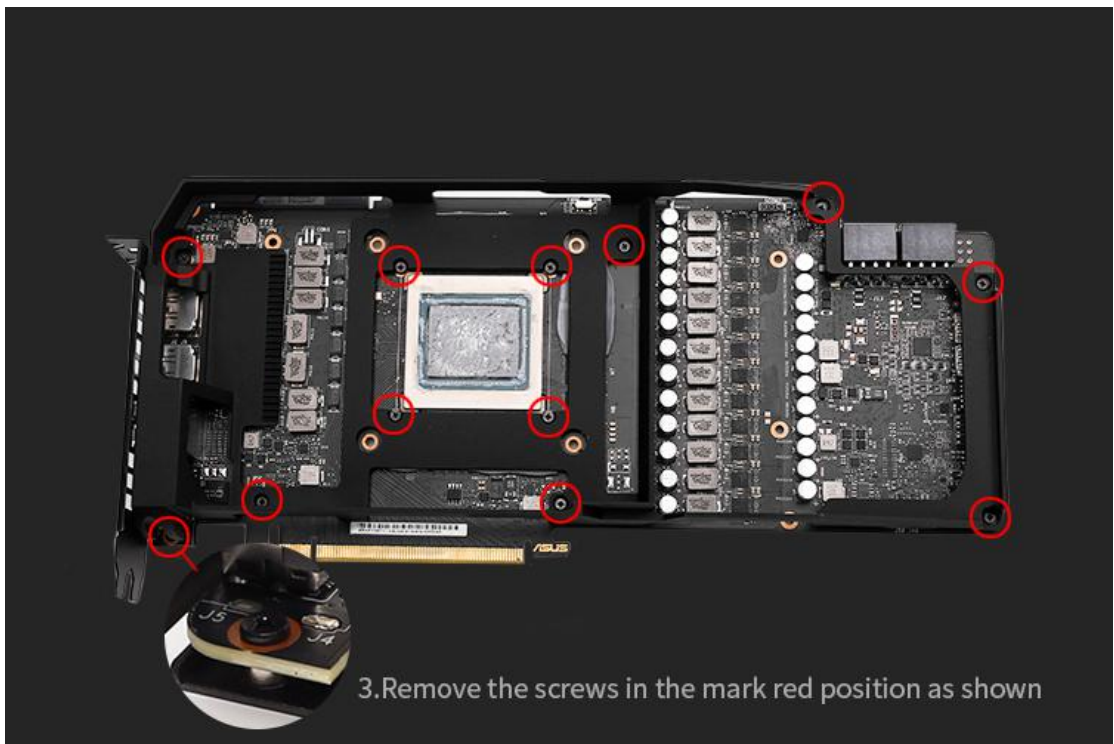


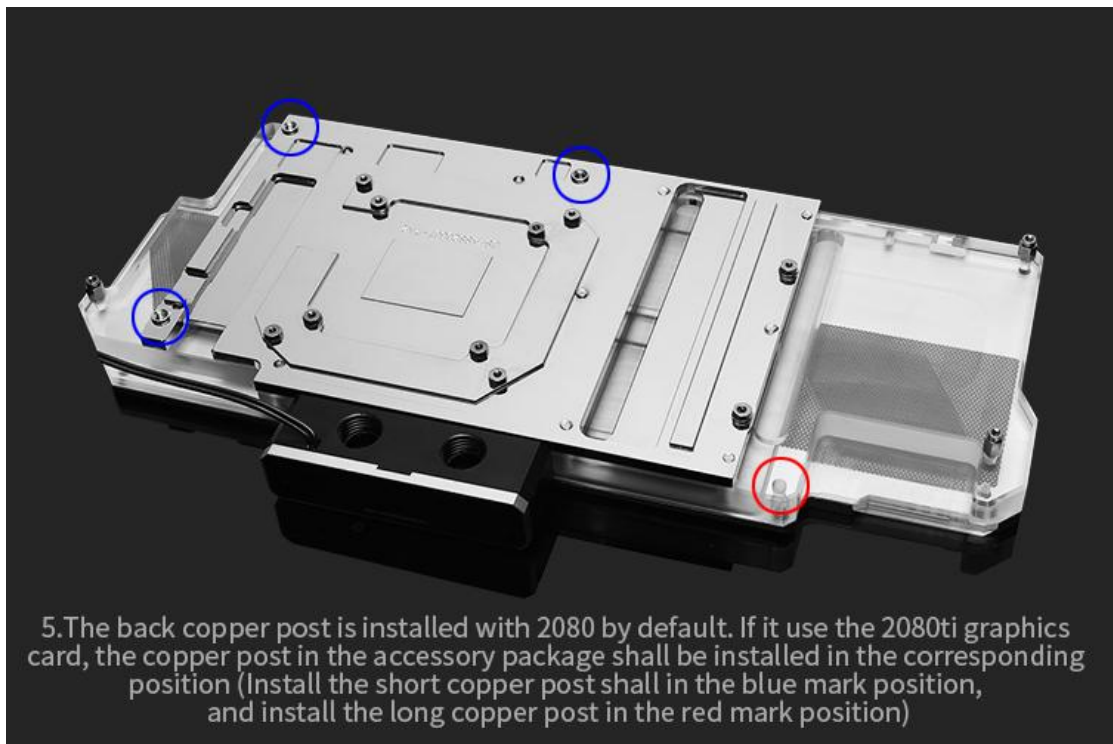
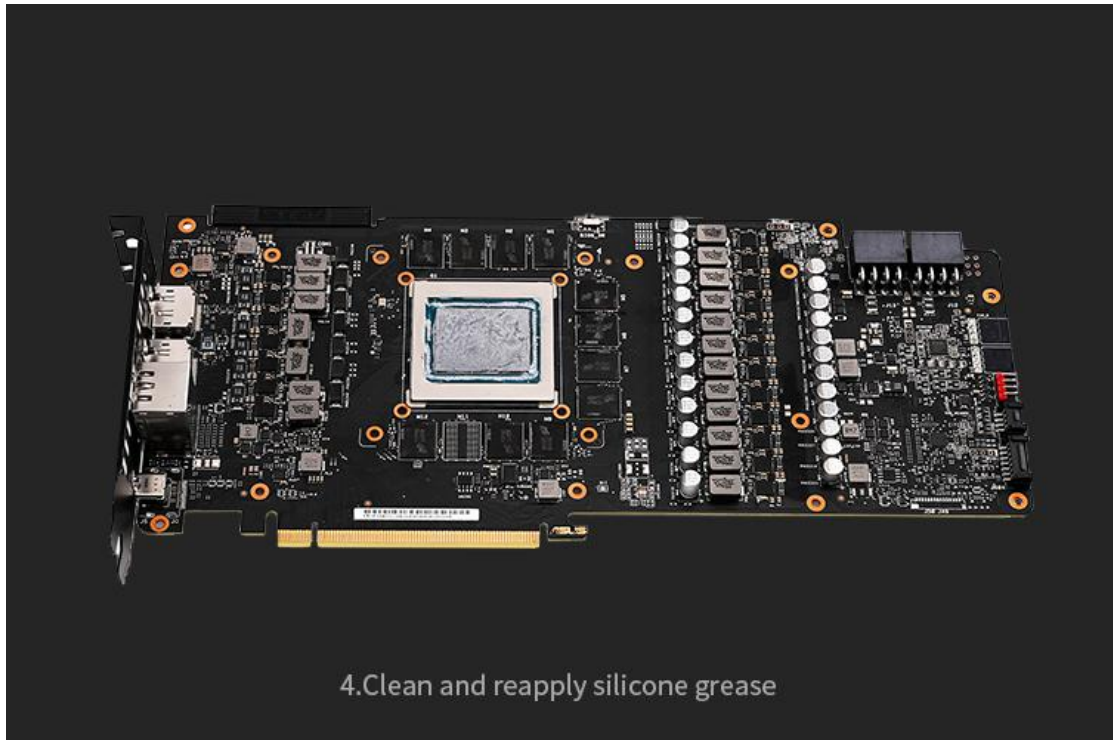
Install the tutorial of (Barrowch full coverage GPU water block with horizontal terminal connector for ASUS ROG STRIX RTX2080T Aurora)

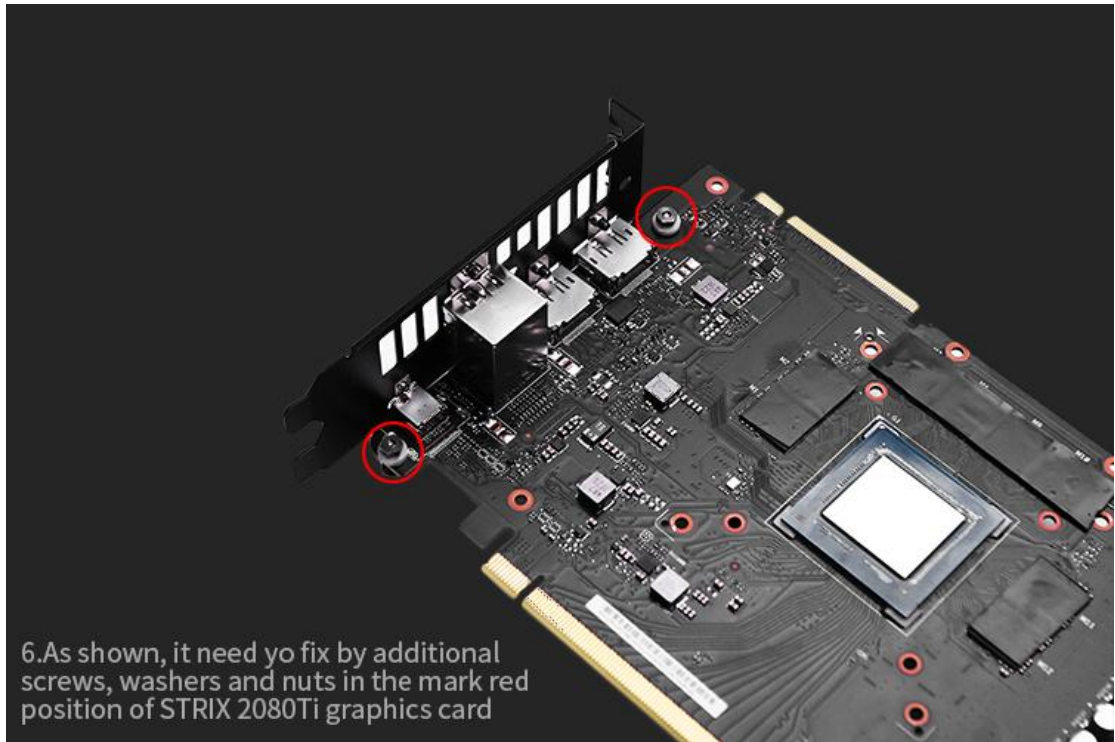
Install tutorial (demonstration)

安装教程 (实例示范)

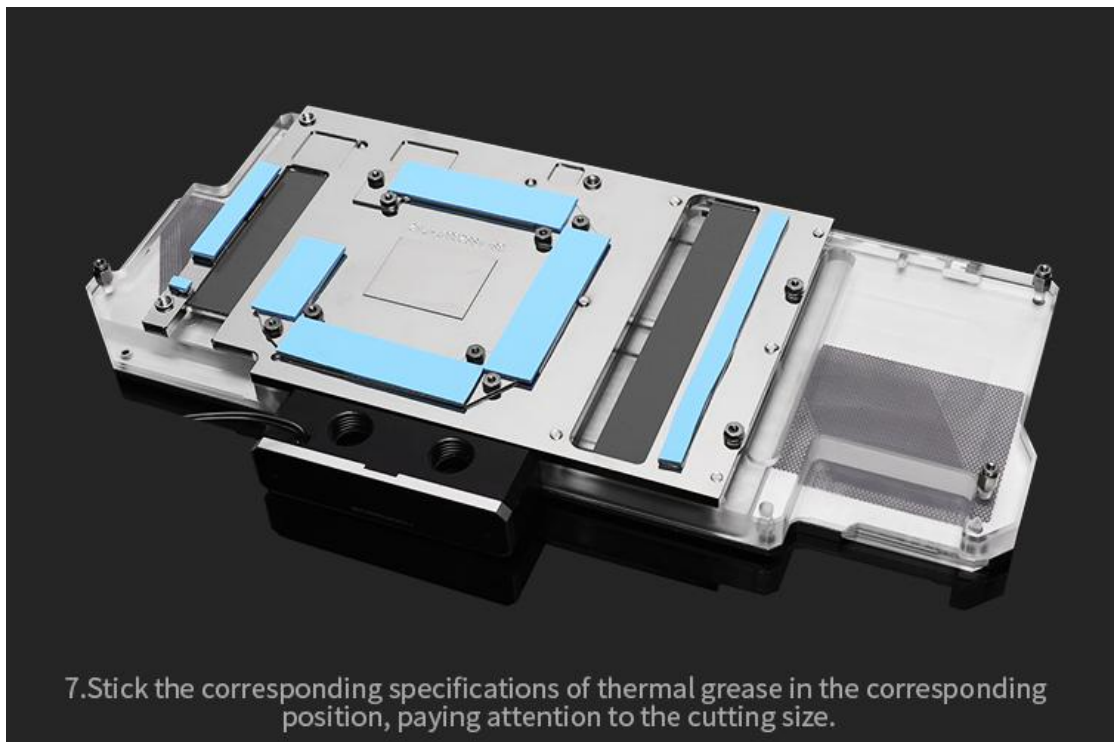








6.As shown, it need yo fix by additional screws, washers and nuts in the mark red position of STRIX 2080Ti graphics card



7.Stick the corresponding specifications of thermal grease in the corresponding position, paying attention to the cutting size.