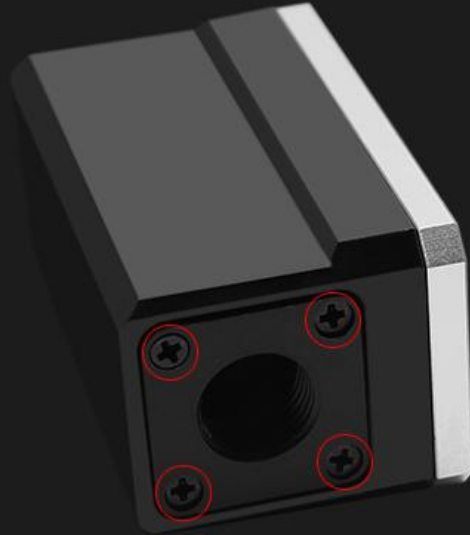


Install the tutorial of(Barrowch Flow meter OLED)

安装示例

INSTALL SAMPLE

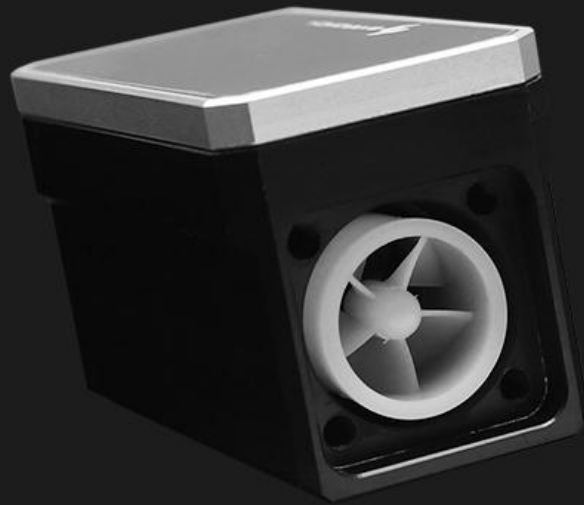
BARROWCH



1.Remove the screws in the mark red position



2.Pull out the screw accessories in the square, and take out impeller and black washer in the body. (Please connect one connector at first in order to pull out easily.)



3.Put the impeller and black washer in the body, and put the black washer is in the outlet direction.(One side of impeller with fan blades is inlet, and without fan blades is outlet.)



4.Mount the screws in the mark red position, and replacement is completed